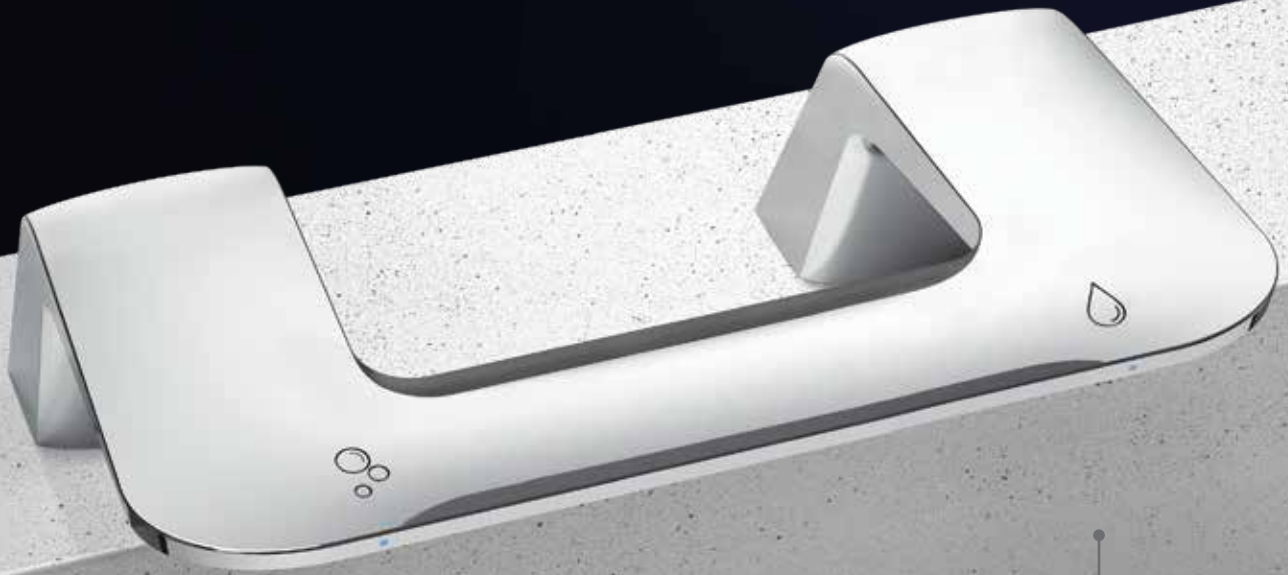


NEW!

WASHBAR[®] DUO

Bradley's award-winning WashBar[®] is now available as a 'Duo' with soap and faucet in a single fixture, providing a sleek upscale look to the restroom.

Enjoy all the benefits of the WashBar while keeping your commitment to paper contracts or preference of hand dryers.



Commercial Washrooms. Brought to life.

bradleycorp.com/washbar

SIMPLE AND SOPHISTICATED

The **NEW** WashBar Duo offers touch-free soap and water in one convenient fixture, eliminating clutter on the deck. Enjoy all the same soap and water advantages as the all-in-one WashBar:

- Icons and LED lights to visually orient users
- Adjustable LED light brightness
- Smart sensor technology eliminates false activations
- Gallon soap capacity to reduce the number of replacements
- Captures soap and water activations for maintenance planning
- Cleaning mode for easy cleaning

The new Duo is available with the Verge® LVA basin in Evero® natural quartz, OmniDeck™ 3010 in Terreon® solid surface, or as a stand alone unit.



Verge LVA-Series with WashBar Duo



OmniDeck with WashBar Duo

ALL-IN-ONE WASHBAR (11")



NEW WASHBAR DUO (8")



WASHBAR DUO FEATURES



CLEAN

- Touch-free activation
- Liquid or foam soap
- Gallon (3.8 L) soap capacity
- Low level LED indicator
- Simply replace soap tank—no cleaning or refilling



RINSE

- Touch-free activation
- 0.5 GPM (1.9 LPM)
- Ultra-high efficient 0.35 GPM (1.3 LPM) option available for sustainable applications



Commercial Washrooms. Brought to Life.

HANDWASHING & DRYING | ACCESSORIES | PARTITIONS | LOCKERS

bradleycorp.com

800 BRADLEY +1 262 251 6000
W142 N9101 Fountain Boulevard
Menomonee Falls, WI USA 53051

4289-2.5-0819